

ANEXE

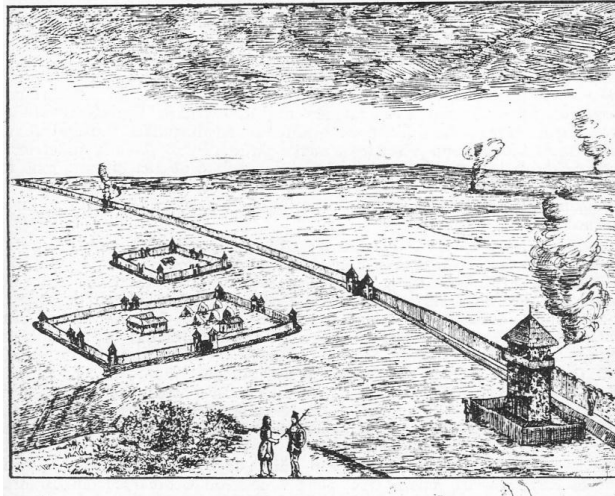


Fig 1. Apud D. Tudor: Aspect de pe *limes -Transalutanus* (reconstituire Tocilescu-Polonic).

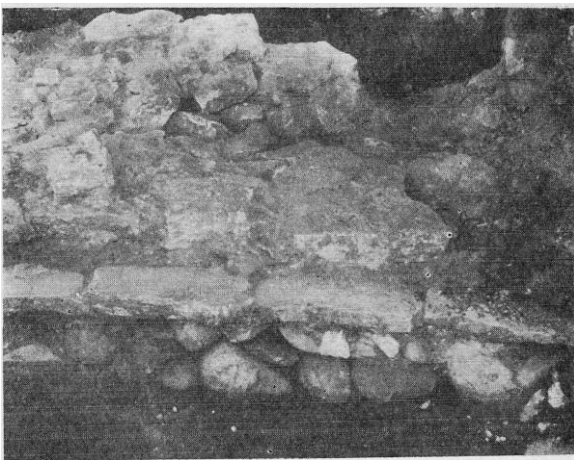


Fig 2. Apud D. Tudor *Arutela* : turn de la poartă (1) si *Castra Traiana* (2) : zidul castrului.

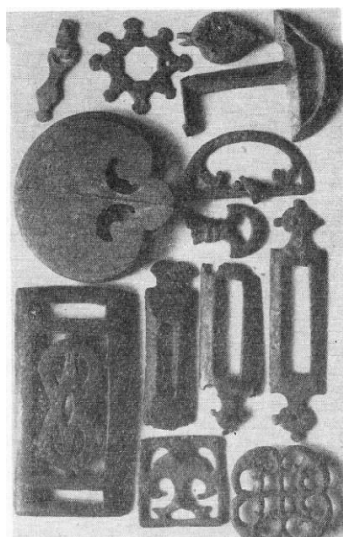


Fig 3. Apud D. Tudor: *Copăceni*. Obiectele de bronz. MNA - București,

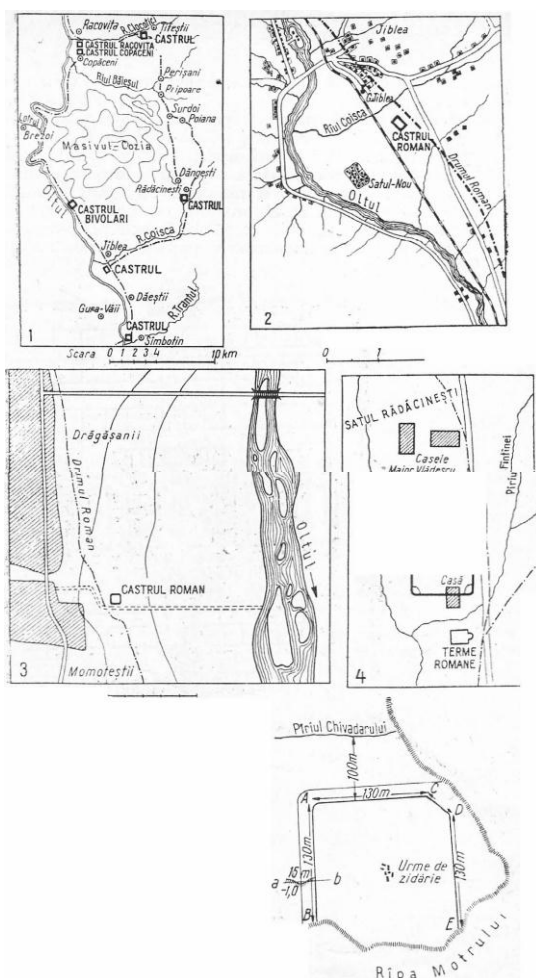
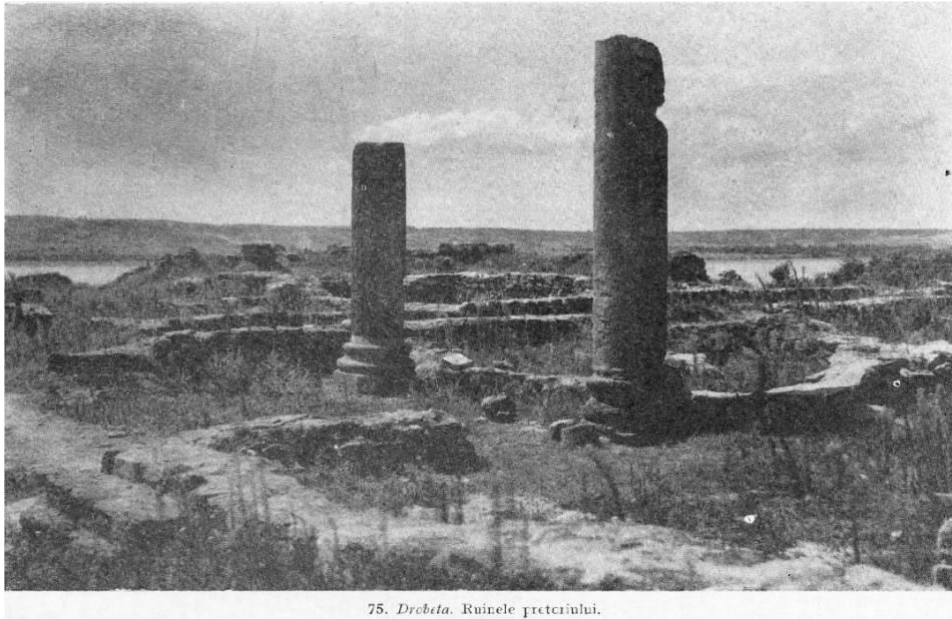


Fig.4. Apud D. Tudor: Diferite castre romane pe Olt și Jiu



75. Drobeta. Ruinele pretoriului.

Fig. 5 Apud D. Tudor: *Drobeta. Ruinele pretoriului*

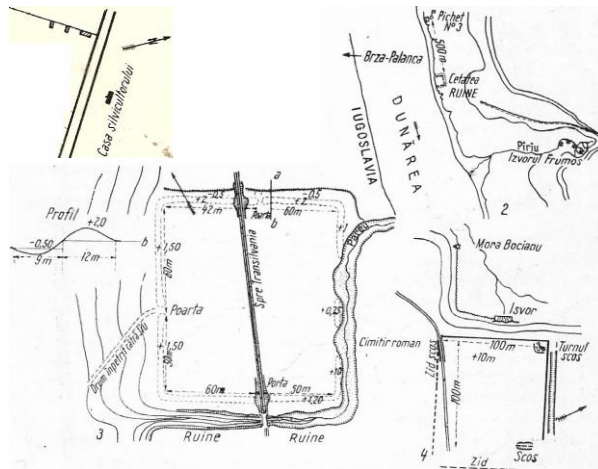
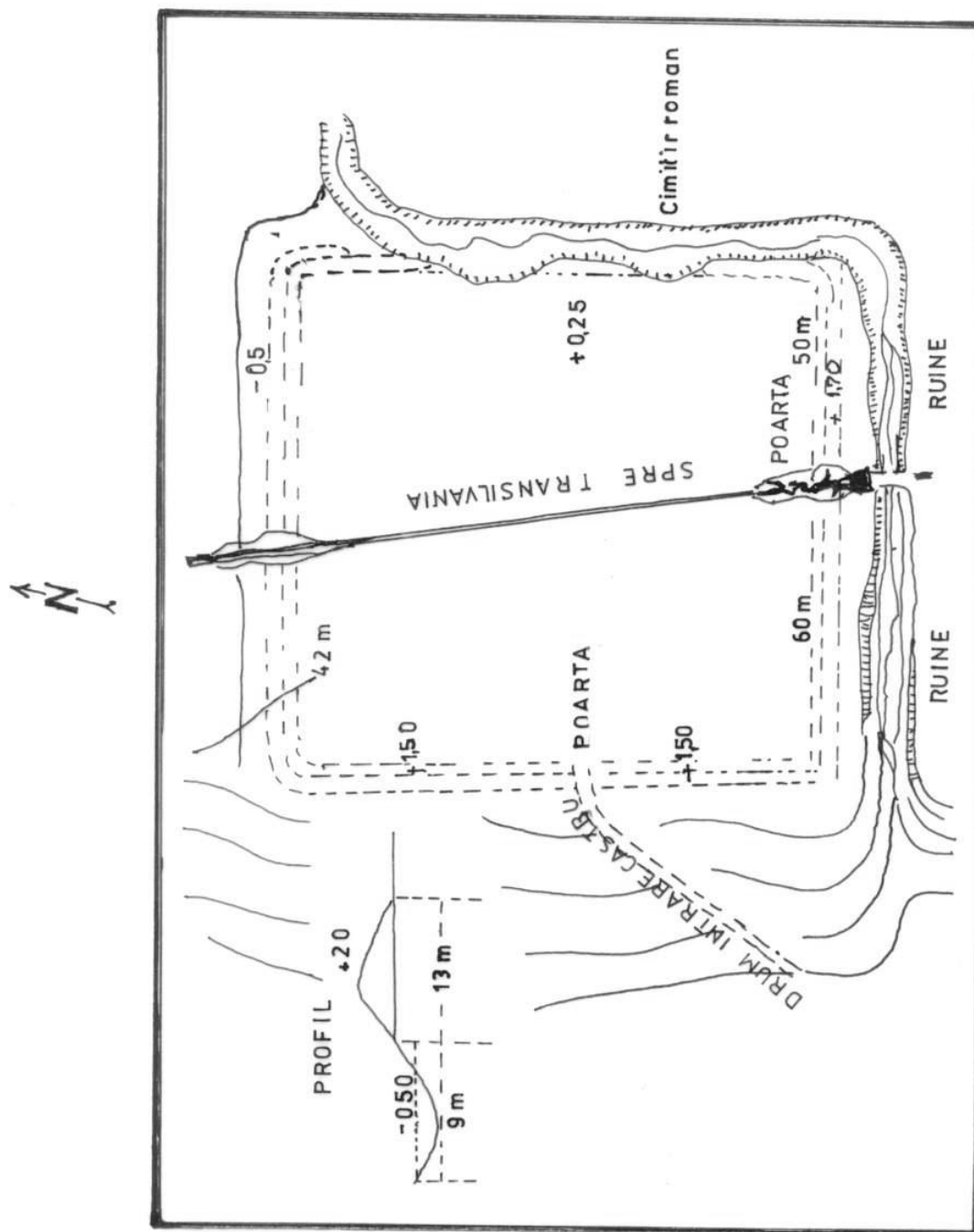
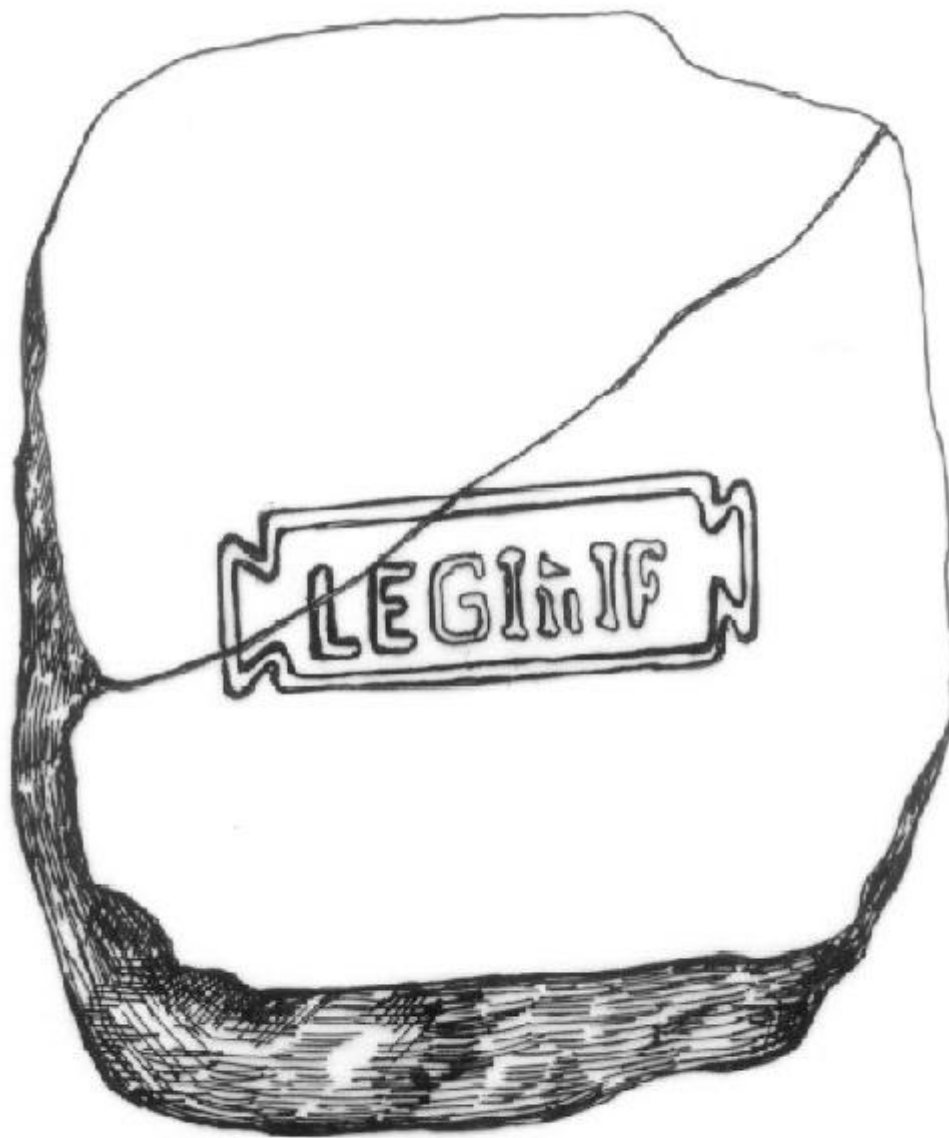


Fig. 6. Apud D. Tudor: *Castre romane din Oltenia*



PLANUL FORTIFICAȚIEI DE LA „VÂRTOP” (DUPĂ PAMFIL POLONIC (1897)).

Pl. III. Castrul de la Bumbești-Jiu „Vârtop” (după P. Polonic)



0 1 2

Pl. IV. Bumbesti – Jiu „Vârtop”. Cărămidă șampilată, (după V. Marinoiu)

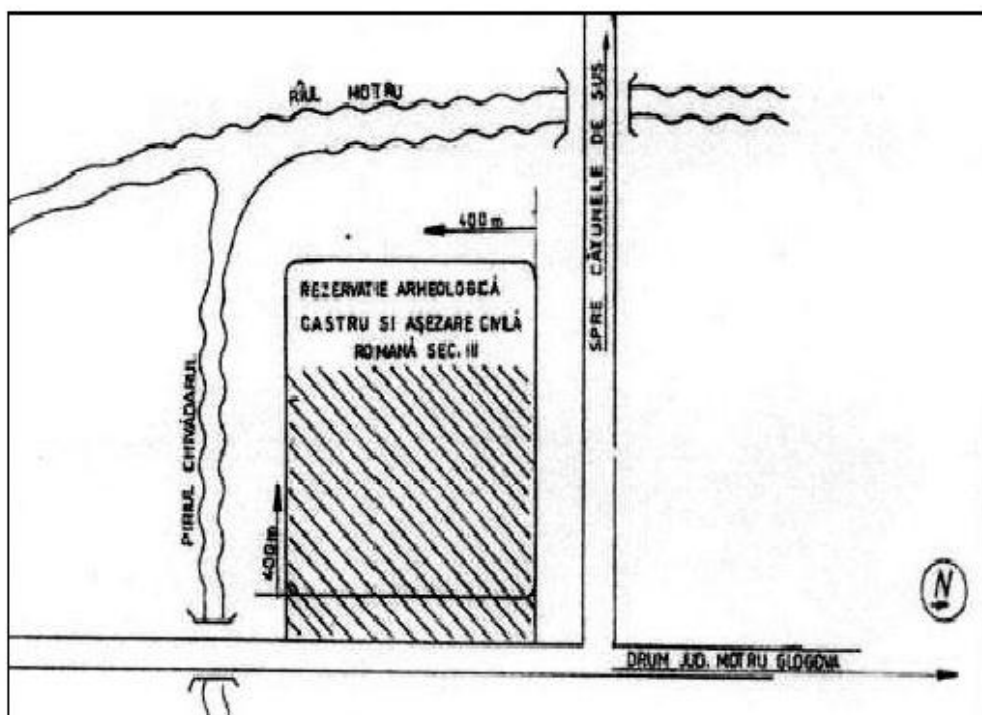
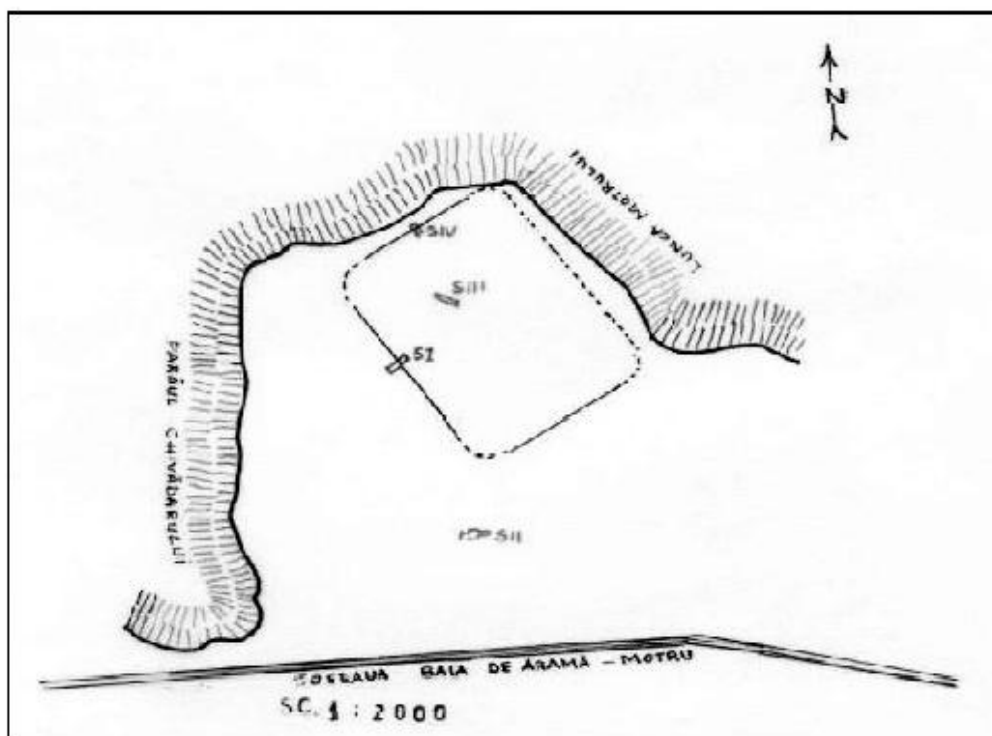
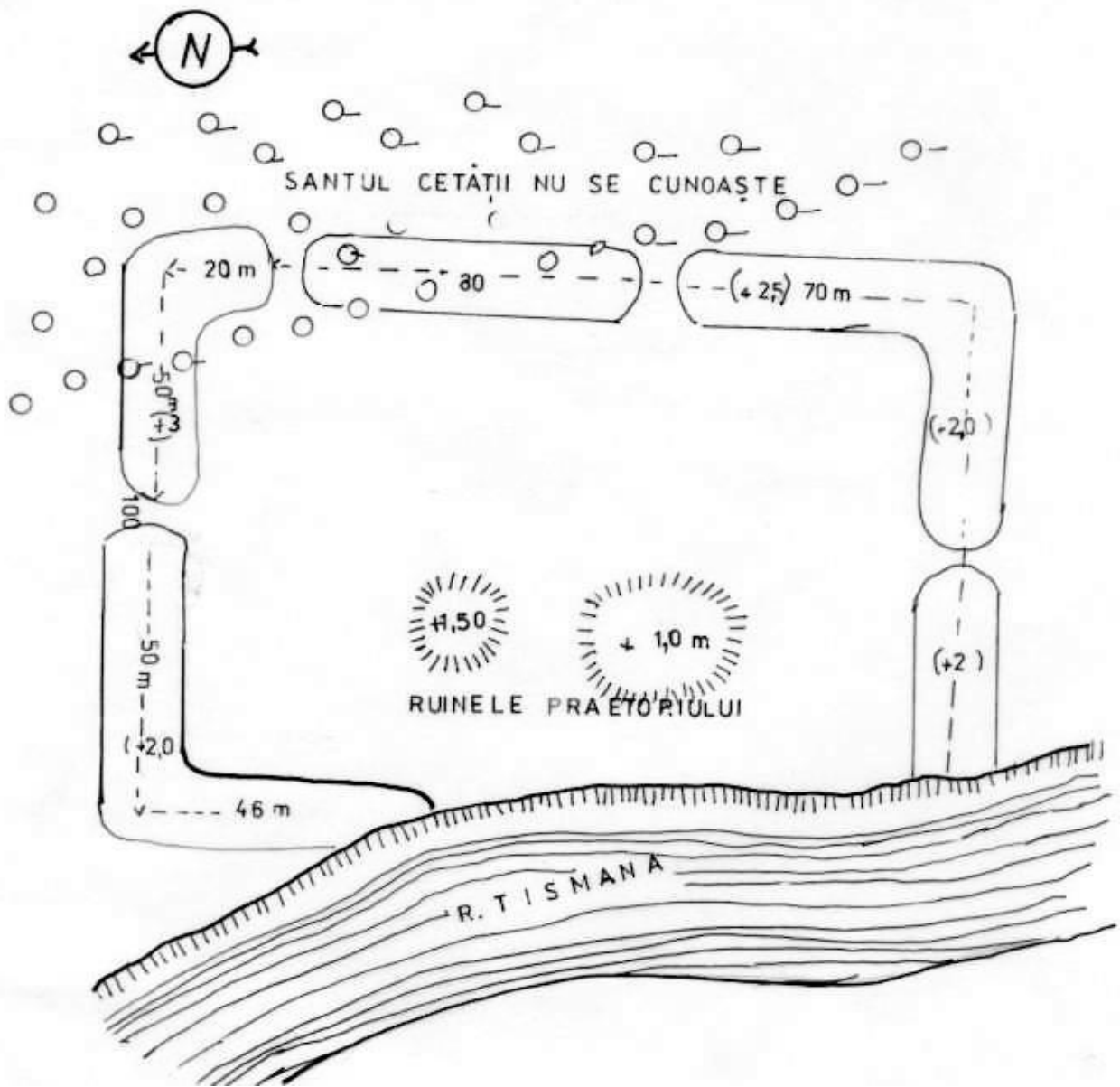
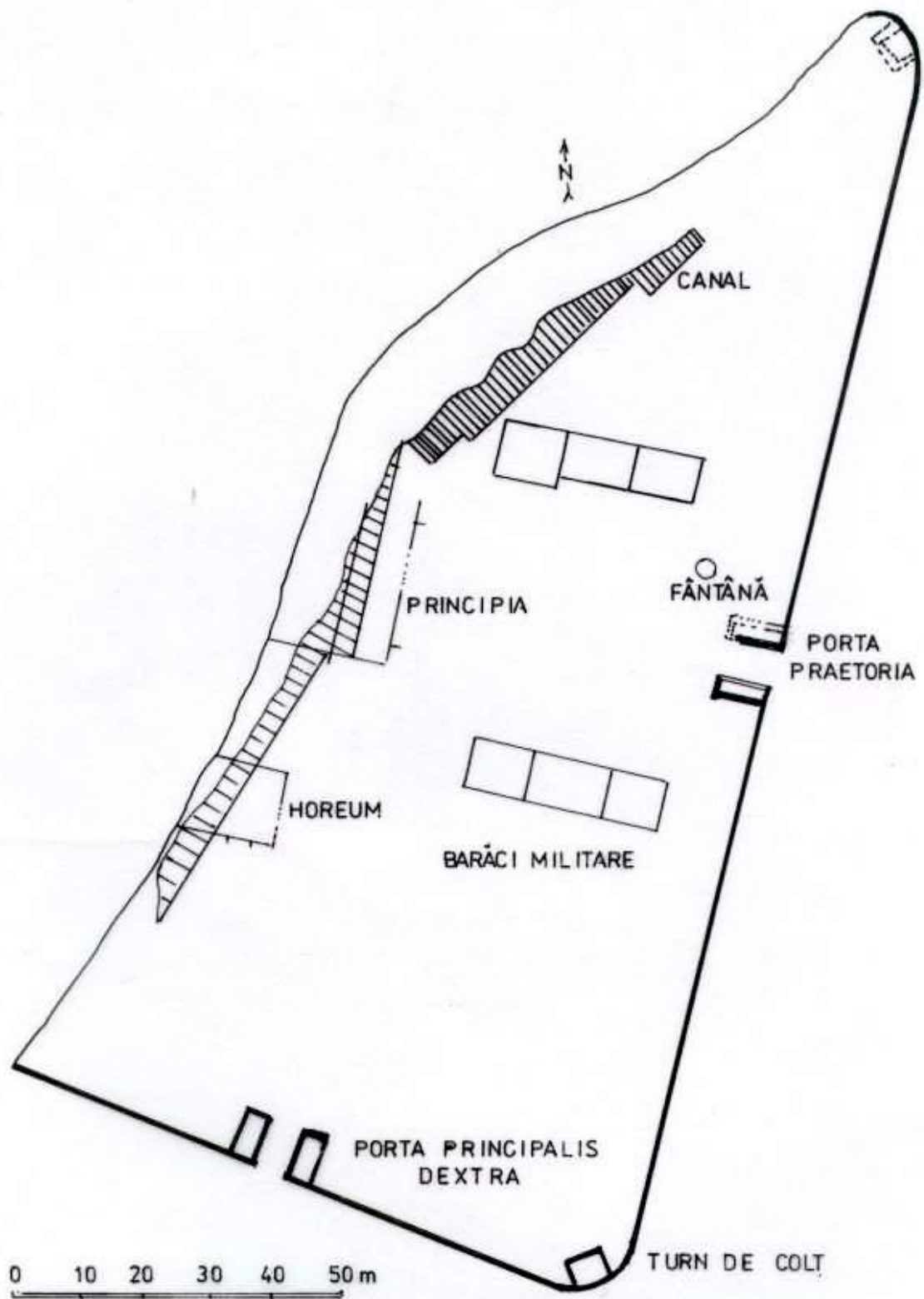


Fig. 19. Planul castrului (scara 1/2000, după D. Tudor și M. Davidescu) de la Cătunele

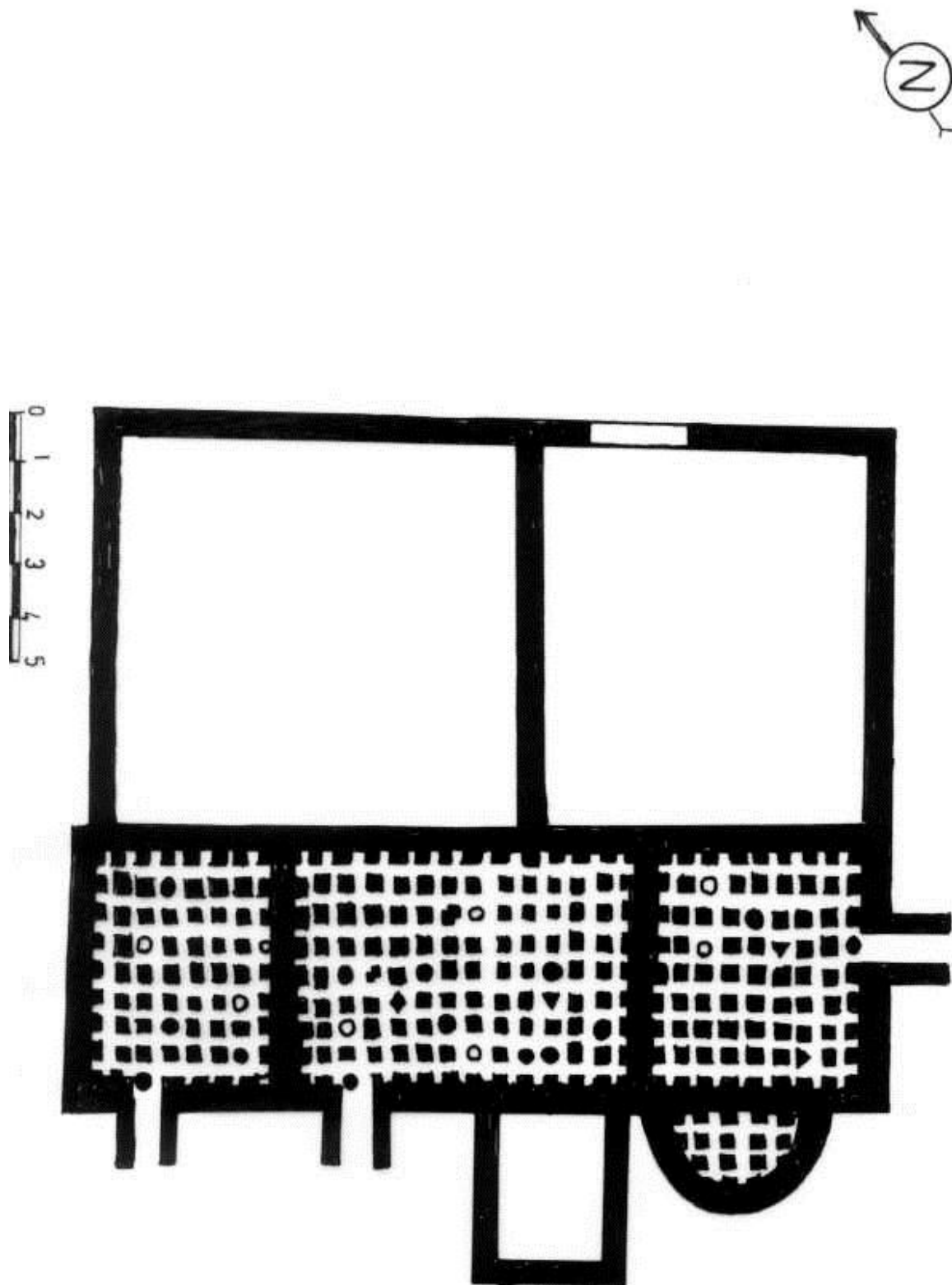
Pl. V.



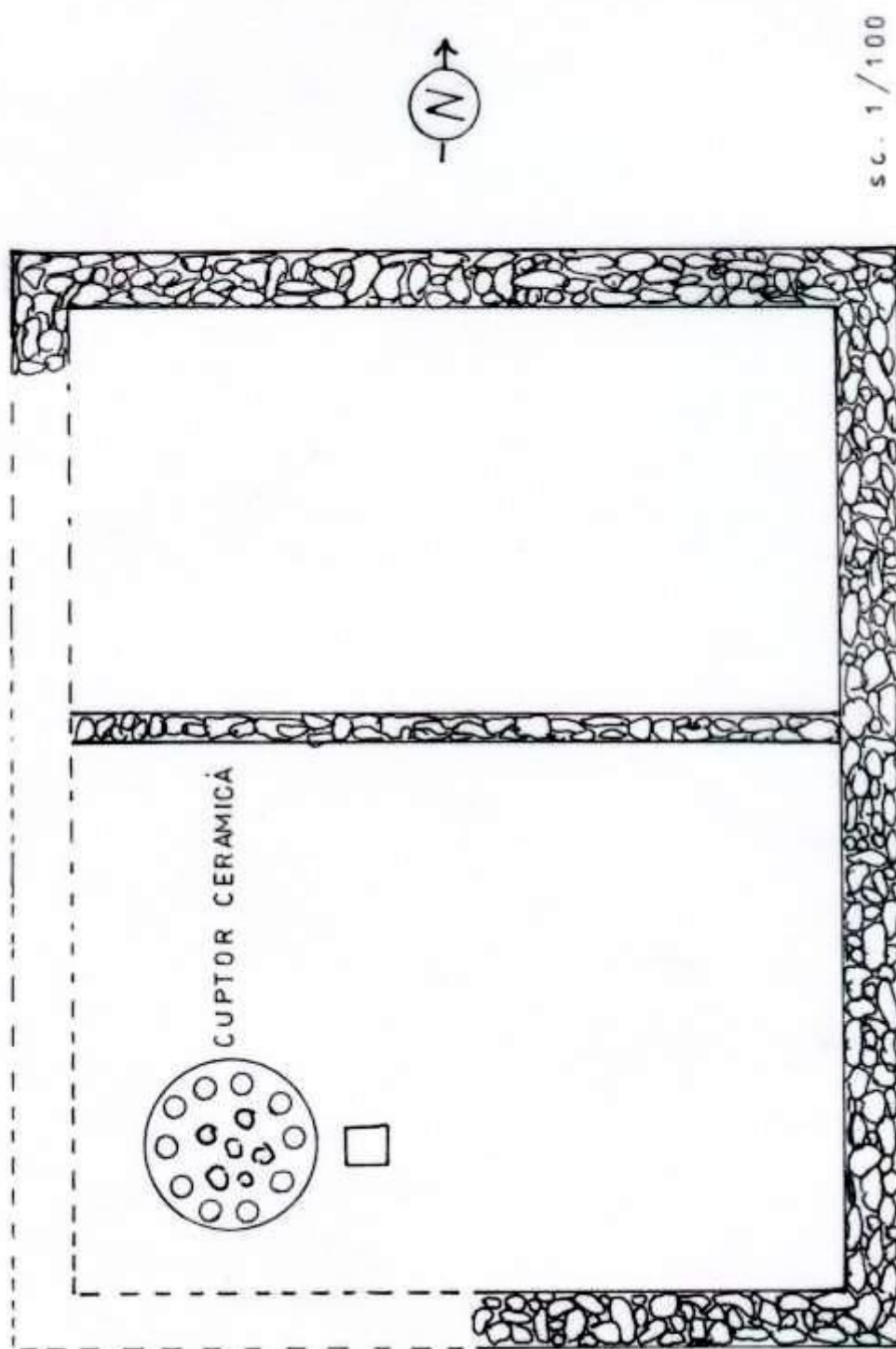
Pl. VI. Castrul de la Pinoasa – Vârț (după P. Polonic)



Pl. VII. Castrul Bumbesti-Jiu „Gară” (după V. Marinoiu)



Pl. VIII. Bumbesti – Jiu „Gară” *Thermae*-le (după P. Polonic)



Pl. IX. Bumbesti – Jiu „Gară” Atelier de olar (după V. Marinoiu)

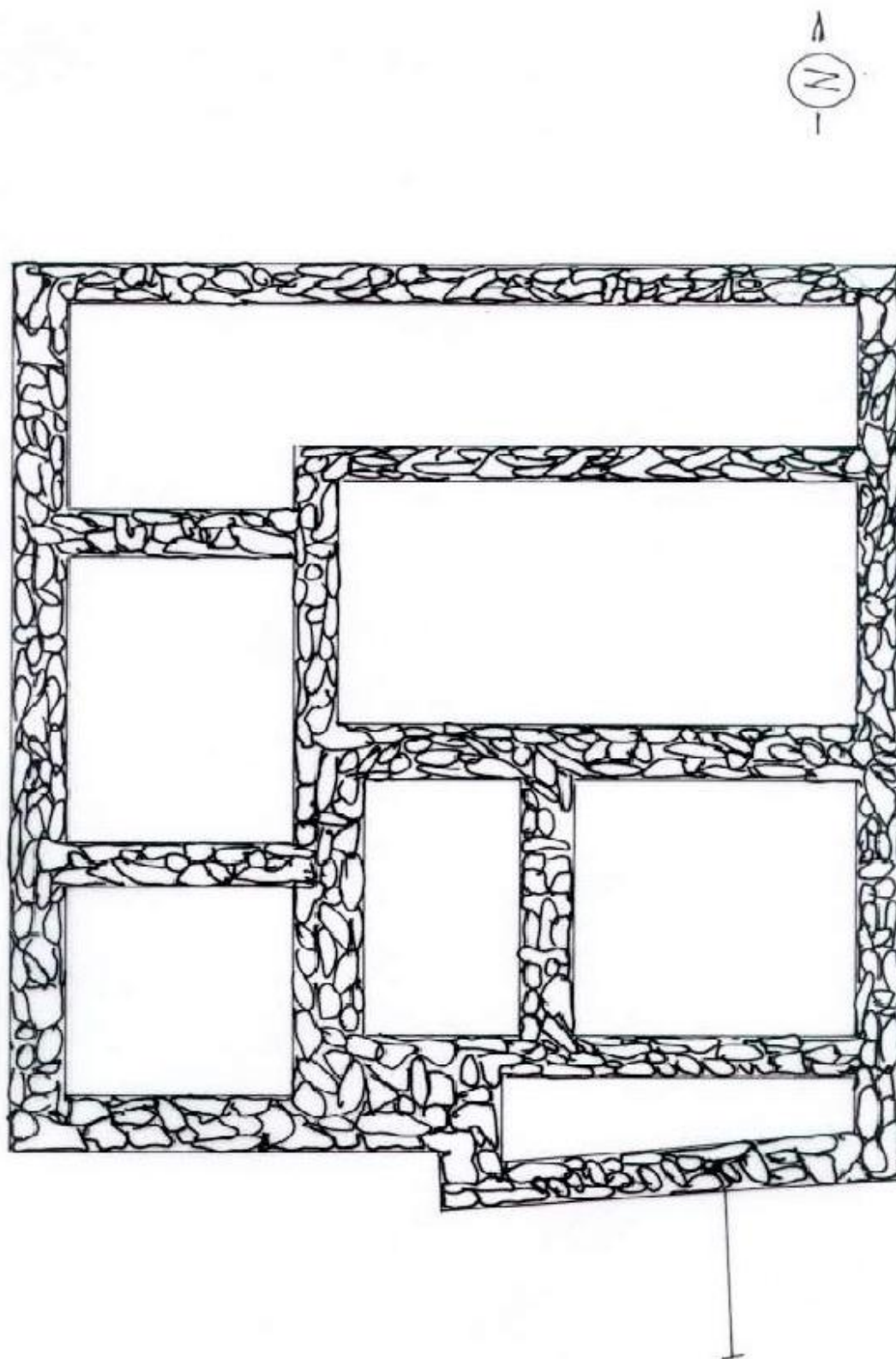
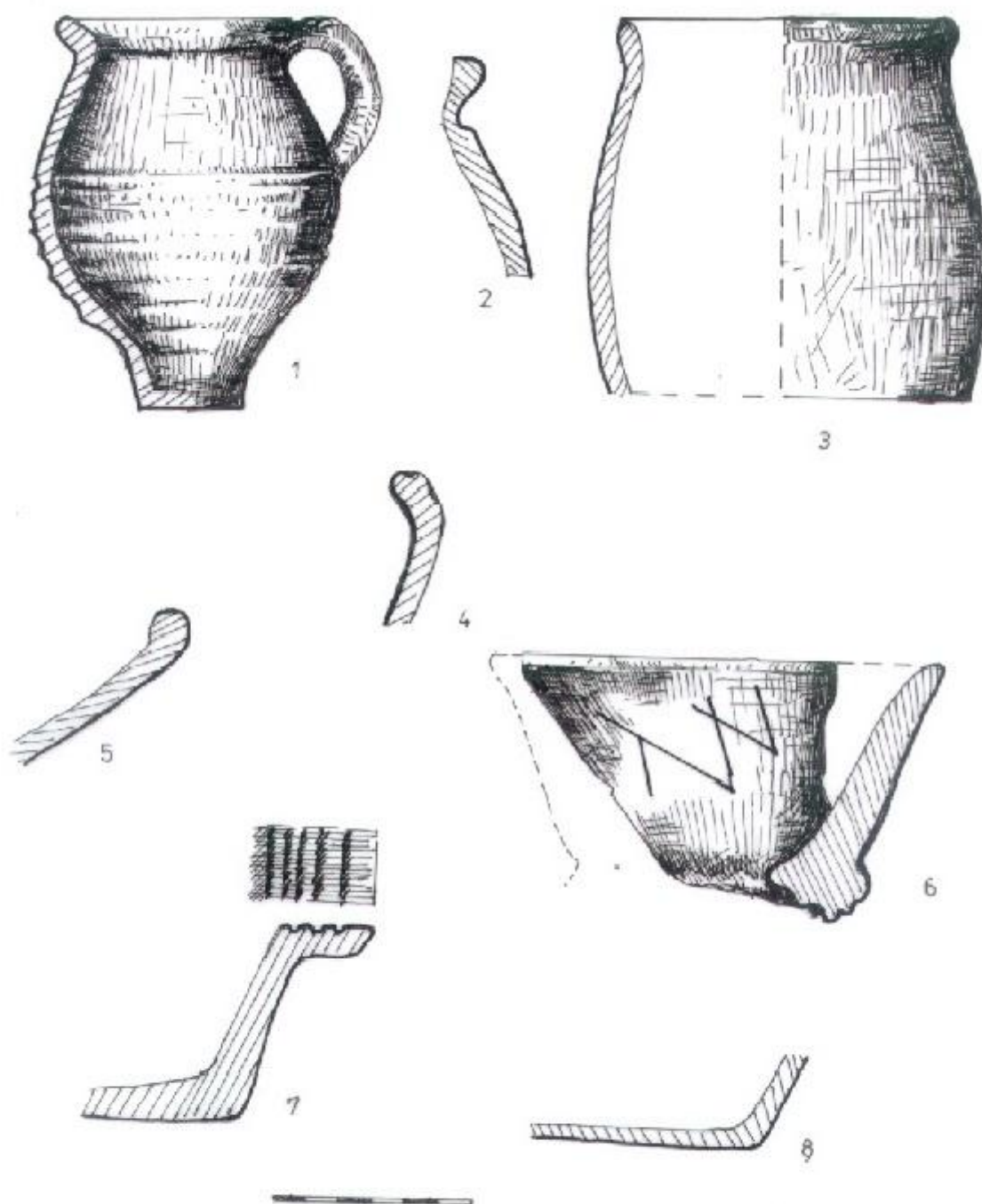
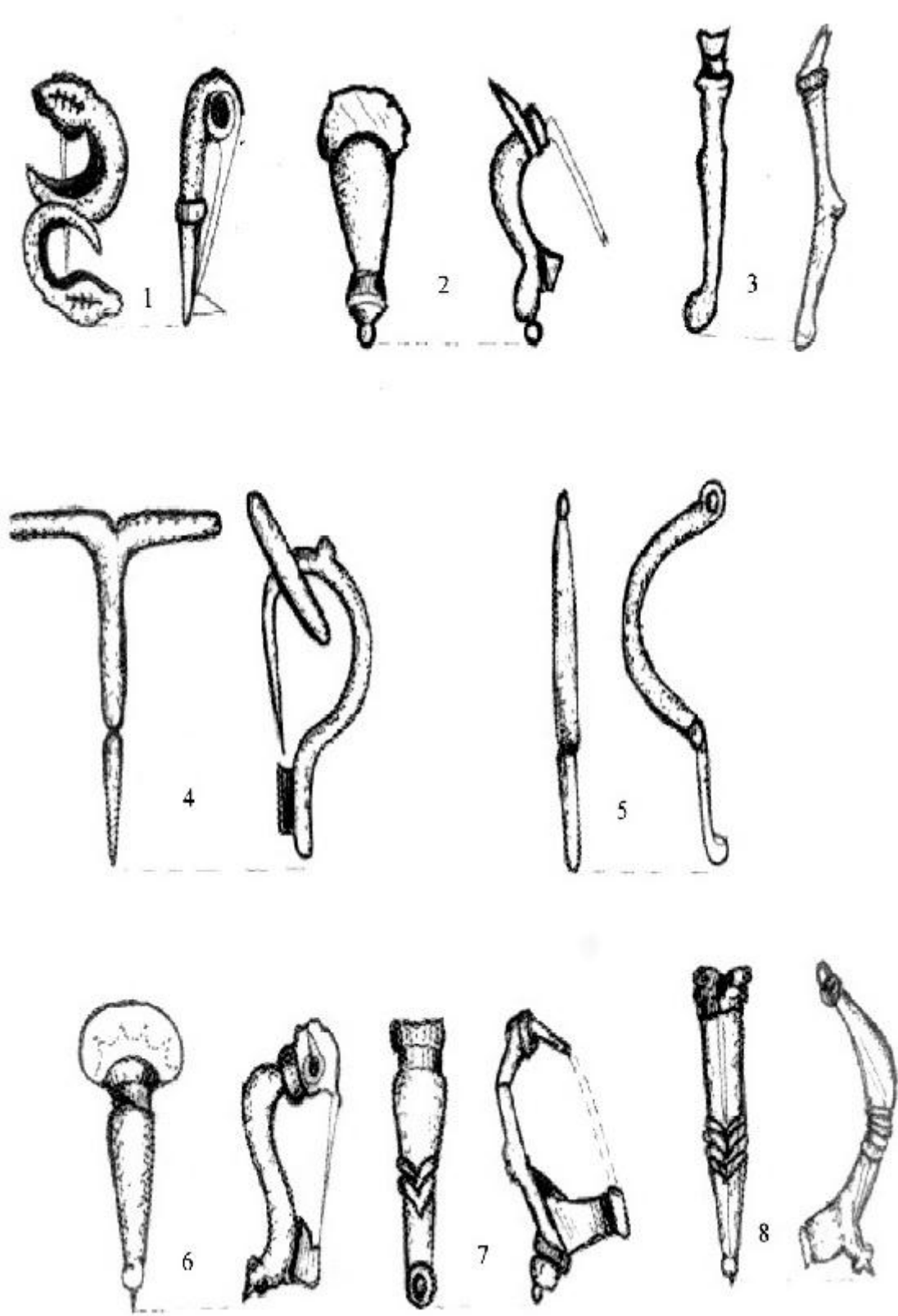


Fig. 14. Planul locuinței “C” din *vicus*-ul militar de la Bumbești Jiu “Gară”

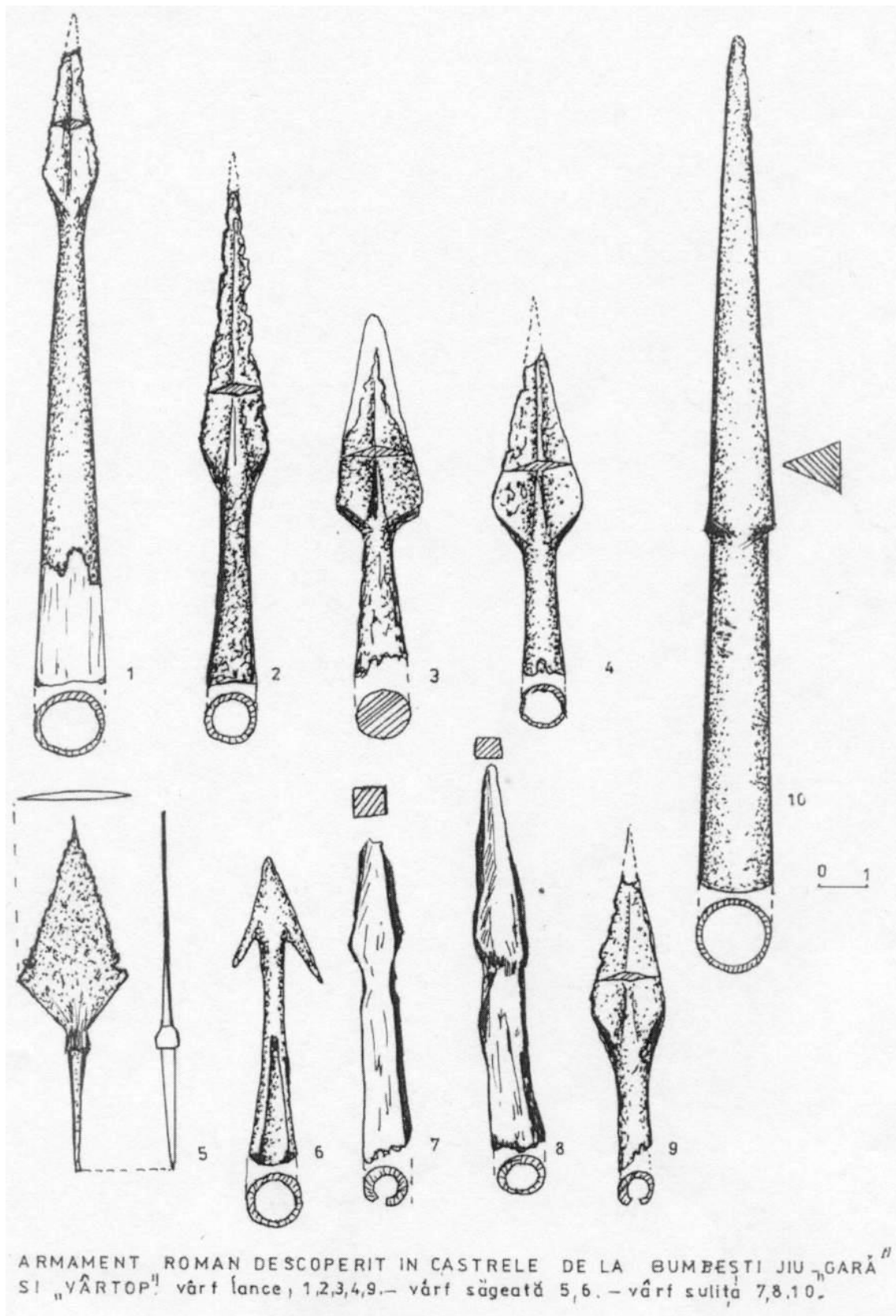
Pl. X. (după V. Marinoiu)



Pl. XI. Bumbesti Jiu „Gară” .Ceramică (după V. Marinoiu)



Pl. XIII, Bumbești – Jiu „Gară”. Fibule de bronz (1,3-5,7)
 Bumbești – Jiu „Vârtop”. Fibule de bronz (2,6,8), (după V. Marinoiu)



Pl. XIX. Arme (după V. Marinoiu)



Pl. XXI. Bumbești – Jiu (Vârtop). Aspecte de săpătură